

**DUMMEY WINDING ARBORS**



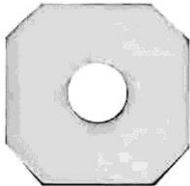
07.380 .. 3/8" high    07.500 .. 1/2" high  
 07.100 ... 1" high  
 Packaged 2 of a size to a package  
 \$ 2.75 pkg. or 6 pkg. for \$ 2.50 pkg.

**Rubber Washers**



1/8" Thick Rubber washer for spacing quartz movement back in the case. Washers are 2" OD with 3/8" ID hole. 12 Washers per package.  
 74.121 ..... \$ 3.00 pkg.

**Adhesive Mounting Pad**



This double sided Adhesive mounting pad is used for mounting quartz movements to dials and clock cases. Don't work well with the shortest shaft movements. The pad is 1-7/8" Square with center knock out hole.  
 15.160 ..... \$ 1.00 ea.  
 6 or more ..... \$ 0.85 ea.

**AA or C Cell Battery Converter**



You can convert any movement or things That take AA or C Battery into 110Volt DC. The converter will provide an Uninterrupted power supply,so in the event Of a power outage the battery will operate For up to 3 weeks. Comes with 6 ft cord.  
 15.624 ..... AA Battery ..... \$ 10.50 ea.  
 6 or more \$ 9.50 ea.  
 15.625 ..... C Battery ..... \$ 12.00 ea.  
 6 or more \$ 10.50 ea.

**ELECTRIC CORDS**



EC600 ..... 6' Brown Cord  
 EC601 ..... 6' White Cord  
 \$ 3.00 ea  
 6 to 11 \$ 2.75 ea. ... 12& up \$ 2.50 ea.

**"S" ROTOR**



Replaces: M2492, M3072, M3083, M3141, M3154  
 M3156, M3162, M3296, M3313, M3331, M3333  
 M3378 M3394, M3404, M3476, M3479, M3481  
 M3518, M3520, M3522, M3524, M3533, M3633  
 M3635, M3637, M3641  
 SR3520 ..... \$ 15.00 ea.

**Electric 2-1/4" X 2-1/4" Mini Movements.**



Compact electric movement the same size As our AA Quartz movements. 2-1/4" square. 5/16" Threaded mounting shaft. This movement uses the standard I Stack hands. **Hands not included.**  
 110 Volt/UL Listed 6' Brown Cord.  
 Each movement comes complete with mounting hardware.

Part no.	Shaft Length	Price
EM 316	9/16" 1 to 5	\$ 9.00ea.
EM 500	15/16" 6 to 11	\$ 8.75ea.
EM 750	1-3/16" 12 & up	\$ 8.50ea.

**SYNCHRON MOTOR**



Hansen A43RA motor  
 1RPM 60 cycle.  
 With a 10 tooth pinion.  
 2" diameter, and  
 1-3/8 deep  
 SM43 ..... \$ 33.75

**JEFFERSON GOLDEN HOUR MOTOR**



Jefferson Golden Hour  
 1/6 RPM (R) 27 Tooth gear.  
 GH800 ..... \$ 45.75

**Telechron "H" Field & Coil Assembly**



HFC3632 ..... \$ 15.00 ea.

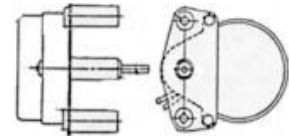
Prices Subject To Change Without Notice.

**"H" Type Rotor**



M3632 60 cycle and 3.6 RPM  
 Replaces: M519, M714, M768, M1145, M1313, M1630  
 M1678, M2023, M2052, M2146, M2275, M2309  
 M2317, M2319, M2322, M2394, M2396, M2398  
 M2475, M2676, M2682, M3025, M3097, M3136  
 M3150, M3151, M3230, M3401, M3434, M3420  
 M3424, M3497, M3499, M3614, M3617  
 HR3632 ..... \$ NA  
 "H" Rotor and "H" Field & Coil Assembly.  
 HFA3632 ..... \$ NA

**SIMPLEX MOTOR**



This motor will also replace some "B" Rotor applications.  
 One RPM 60 cycles  
**SM 120 is Right Hand rotation**  
 SM120 ..... \$ 45.50 ea.  
 3 or more ..... \$ 45.25 ea.

**Quartz Trigger Replacement Movements For Trains, Birds, Cuckoo, and Many More**



Movement Size  
 2-1/8 X 2-1/8 X 5/8  
 Requires 1 AA Battery  
 Not Included

Hand shaft for 15.454 is 7/8" Long  
 The Hand Shaft on this Movement takes I Stack Hands.  
 15.454 ..... \$ 13.25 ea.  
 6 or More \$ 13.00 ea.

**Quartz Trigger Replacement Movements For Trains, Birds, Cuckoo, and Many More**



Movement Size  
 2-1/8 X 2-1/8 X 9/16  
 Requires 1 AA Battery  
 Not Included

Hour Post Diameter 5.55 mm (0.218")  
 Minute Post Diameter 3.66 mm (0.144")  
 The Hand Shaft on this Movements is for Push On Hands.  
 Hand Shaft for 15.455 is 9/16"  
 Hand Shaft for 15.456 is 7/8"  
 15.455 ..... \$ 9.50 ea.  
 15.456 ..... \$ 9.50 ea.  
 6 or More \$ 9.00